

EXCITE

THE HOERBIGER PIONEER CLASS



XperLUBE

Getting lubrication right



CHALLENGE
YOUR
HORIZON

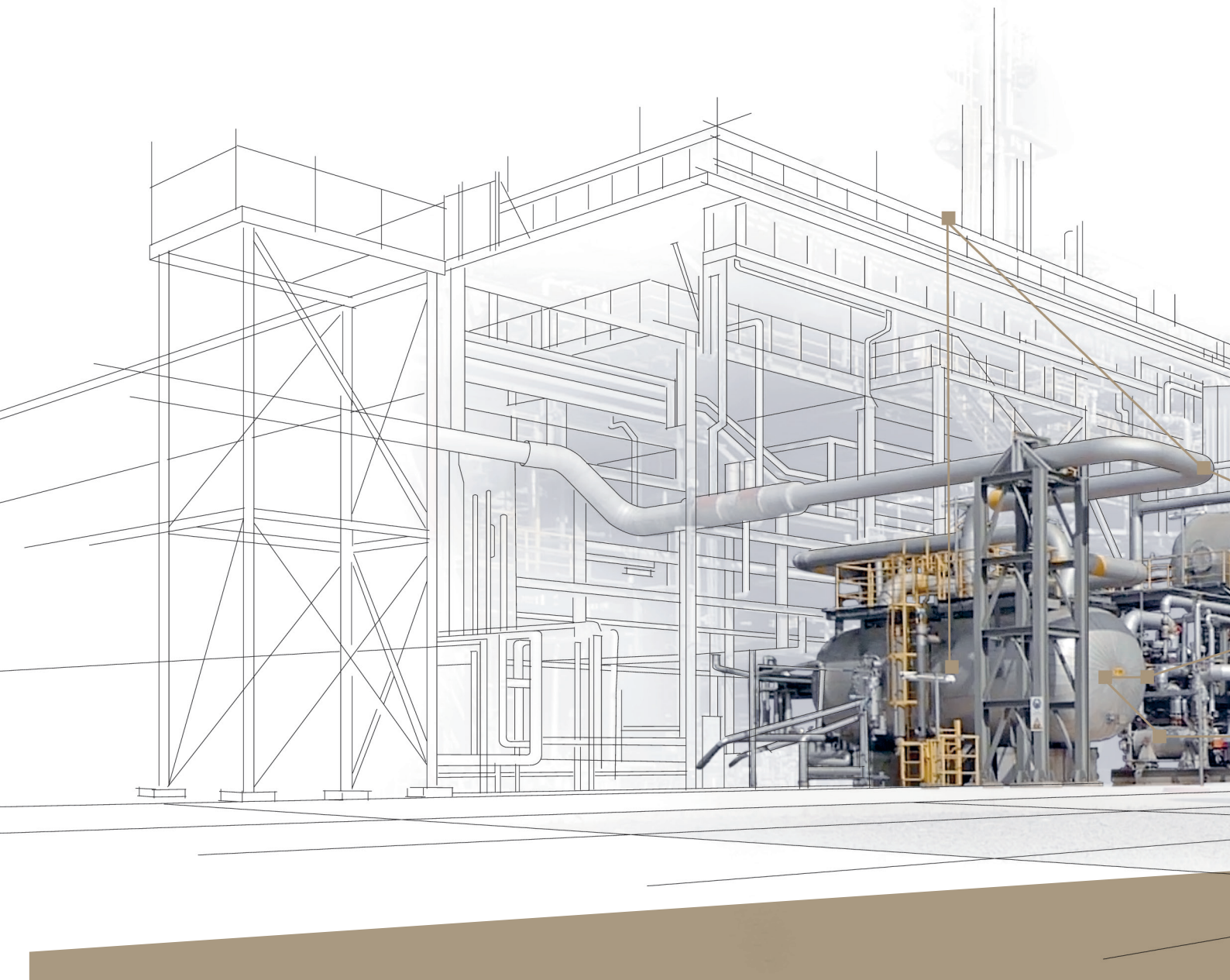

HOERBIGER
because performance counts

EXCITE

THE HOERBIGER PIONEER CLASS

Managing does not imply doing it alone. Rather, it means knowing whom to entrust with important tasks.

Those with an overwhelming concern for detail run the risk of losing sight of the big picture. This does not imply that minor details are insignificant. Successful management, however, requires delegating tasks to experts. As a customer, you develop integrated solutions jointly with HOERBIGER. Technology and service complement each other, forming a comprehensive package that meets the needs and challenges of modern companies. This includes, above all, avoiding downtime, costly production losses, and knock-on problems for other parts of the manufacturing operation. You decide individually in favor of tailor-made HOERBIGER warranty versions and service options. This makes HOERBIGER Excite the ideal approach to critical, sensitive, and challenging business situations.



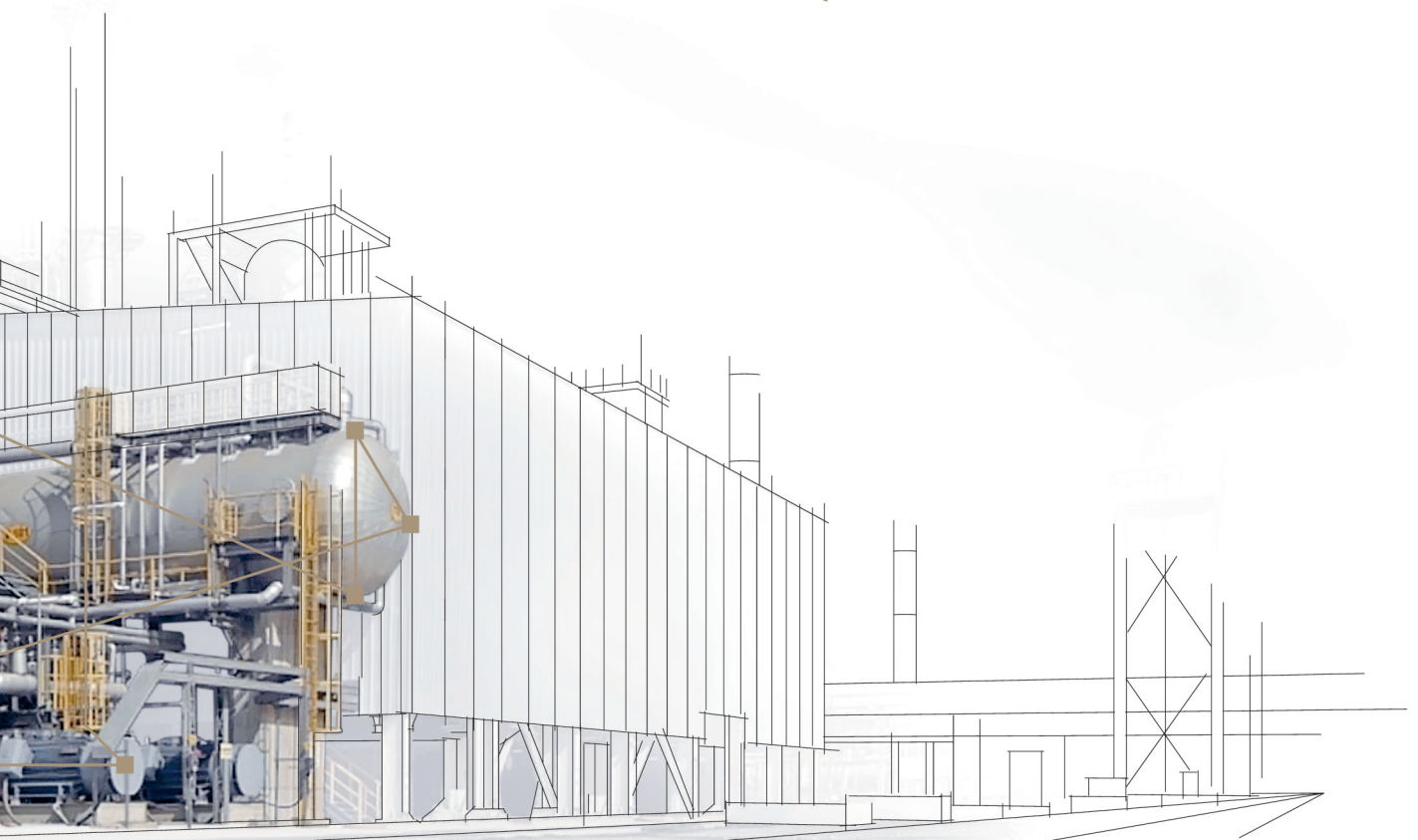


“In general, it is not management’s objective to question the why and the how, but to see to it that a task is resolved. Being aware of this need, HOERBIGER works with leading industrial enterprises worldwide in perfect symbiosis – partnerships that value and trust in the expertise of the other party in its field.”

Precise: optimized performance

Sustainable: use of savings potential

Quick: Return on Investment



**CHALLENGE
YOUR
HORIZON**

EXCITE

THE HOERBIGER PIONEER CLASS

Bringing cylinder lubrication and compressor reliability into a harmonious relationship means to disconnect oil dosing from oil pumping correctly.

Reliable cylinder lubrication is one of the most sensitive topics in the operation of sophisticated reciprocating compressors.

Incorrect oil metering can cause damage through both under- and over-lubrication.

This, in turn, means unplanned downtime, costly production losses, or consequential damage elsewhere in the process.



The time has come to delegate these important tasks to the expert.

HOERBIGER developed XperLUBE to boost the performance and cost efficiency of your compressors.

XperLUBE supplies your system with exactly the right amount of lubricant.

At all times. Under any conditions.

XperLUBE: modern lubrication management

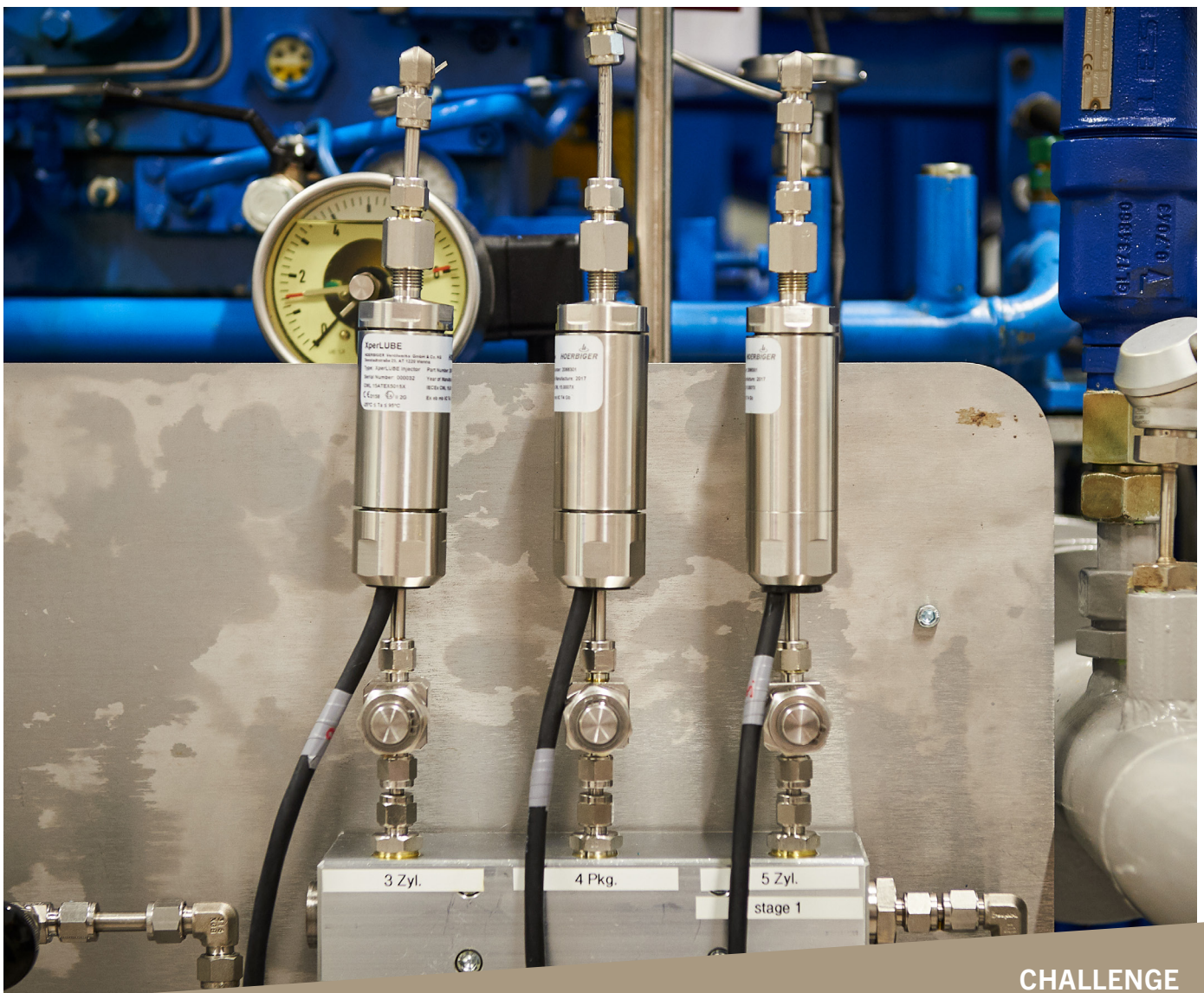
Whether your lubrication issues stem from temperature, pressure, speed, or the failure of lube ports: XperLUBE is faster and more precise than manual control.

XperLUBE automatically supplies exactly the right amount of lubricant to suit your specific requirements and the current operating conditions. When the process changes, the lube rate changes.

XperLUBE. One less thing to worry about.

All parts are standardized and can be replaced individually. This simplifies inventory management and lowers costs.

Individual components are quick and easy to replace, making XperLUBE ideal for retrofitting existing systems.



**CHALLENGE
YOUR
HORIZON**

EXCITE

THE HOERBIGER PIONEER CLASS

XperLUBE at a glance:

XperLUBE controls precisely the amount of oil added to each lubrication point and provides the possibility to adjust the lube rate of each lube point and a significant improvement in the error detection capabilities.



Easy installation and integration

- “Plug-and-Play” cylinder and packing lubrication system
- Easy diagnostics to find malfunctioning injectors

Efficient and reliable operation

- Precise and reliable lube rate management
- No unplanned shut downs due to compressor damages caused by under- or over-lubrication
- Real-time automated monitoring, control and adjustment of oil flow rates for each lube point

Simple and inexpensive maintenance

- Standardized parts for all compressors and applications
- System components can be individually and quickly replaced
- Inspection intervals of the injectors are individually adjusted to maintenance intervals of the compressor

Technical data of XperLUBE

Ambient temperature:	-25°C to 60°C (up to 95°C for injectors)
Max cylinder gas pressure:	375 bar
Max speed:	no restriction
Certificates:	ATEX, IECEx
Conforms to API 618:	yes

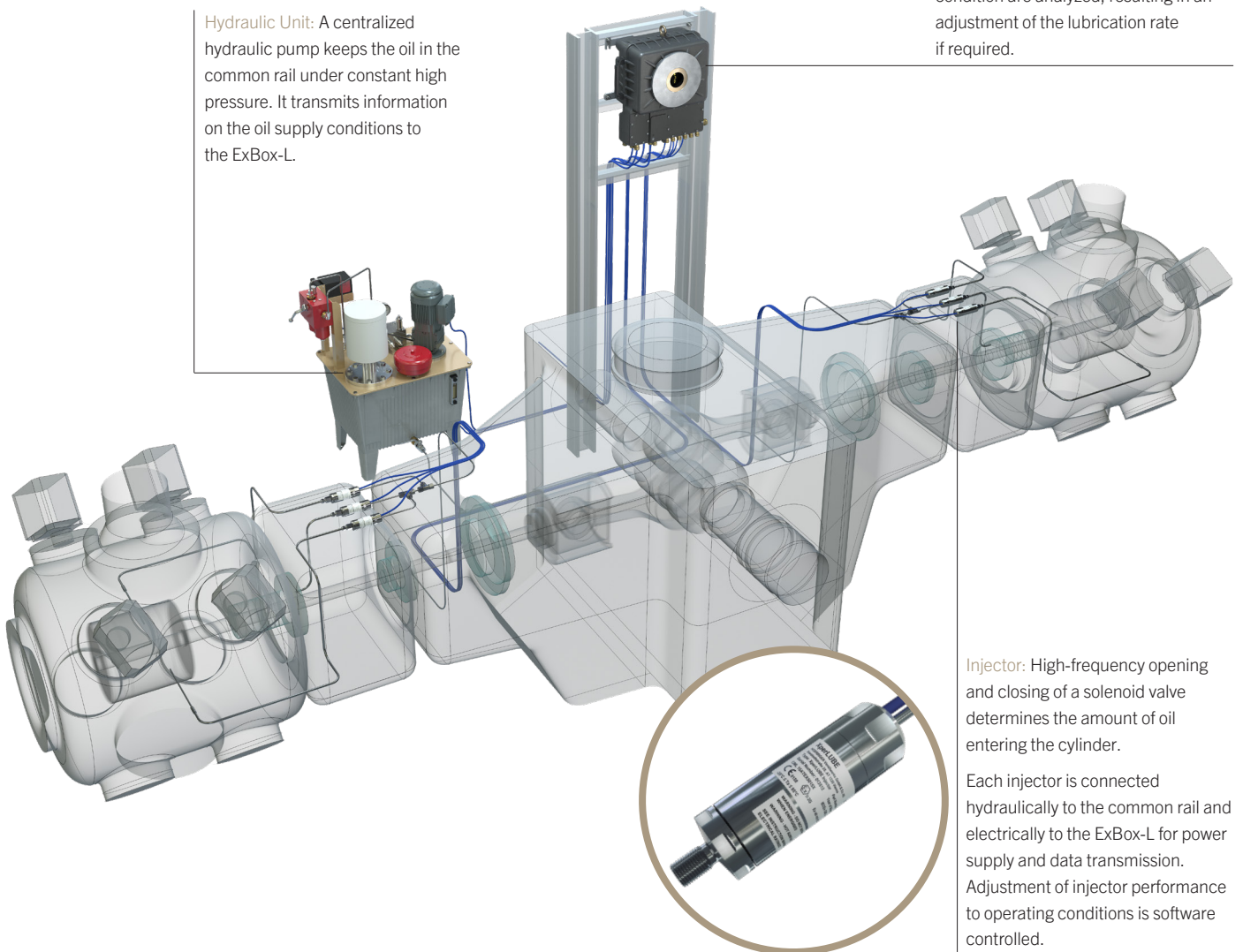
Simple setup, maximum effect:

The XperLUBE system unites value-adding functionalities with easy integration and maintenance.

The idea behind XperLUBE is simple. By disconnecting the oil pressure generation from the process of injecting oil into the cylinder, lubrication precision is greatly increased. A high-pressure common rail supplies oil to the lubrication points. Metering and injection is achieved with injectors, one at each lube point. At the center of the system, a control unit monitors the performance of all injectors and adjusts lubrication rates according to preset parameters. The same injector and hydraulic unit models are used in all applications.

Hydraulic Unit: A centralized hydraulic pump keeps the oil in the common rail under constant high pressure. It transmits information on the oil supply conditions to the ExBox-L.

ExBox-L: In this central control unit, all the data on the lubrication process is monitored in real time. Deviations from preset values for a given operating condition are analyzed, resulting in an adjustment of the lubrication rate if required.



Injector: High-frequency opening and closing of a solenoid valve determines the amount of oil entering the cylinder.

Each injector is connected hydraulically to the common rail and electrically to the ExBox-L for power supply and data transmission. Adjustment of injector performance to operating conditions is software controlled.

**CHALLENGE
YOUR
HORIZON**

www.hoerbiger.com

HOERBIGER is active throughout the world in the energy sector, the process industry, the automotive industry, the mechanical engineering sector, in safety engineering, and in the electrical industry. In 2020, its 5,849 employees achieved sales of 1.031 billion euros in 128 locations across 46 countries. Our products and services are used in reciprocating compressors, gas flow control units, vehicle drives, rotating unions, explosion protection, gas-powered engines, and in automobile hydraulics.

© HOERBIGER 2021

